



52/45 West Row City ACT

2  2  1 

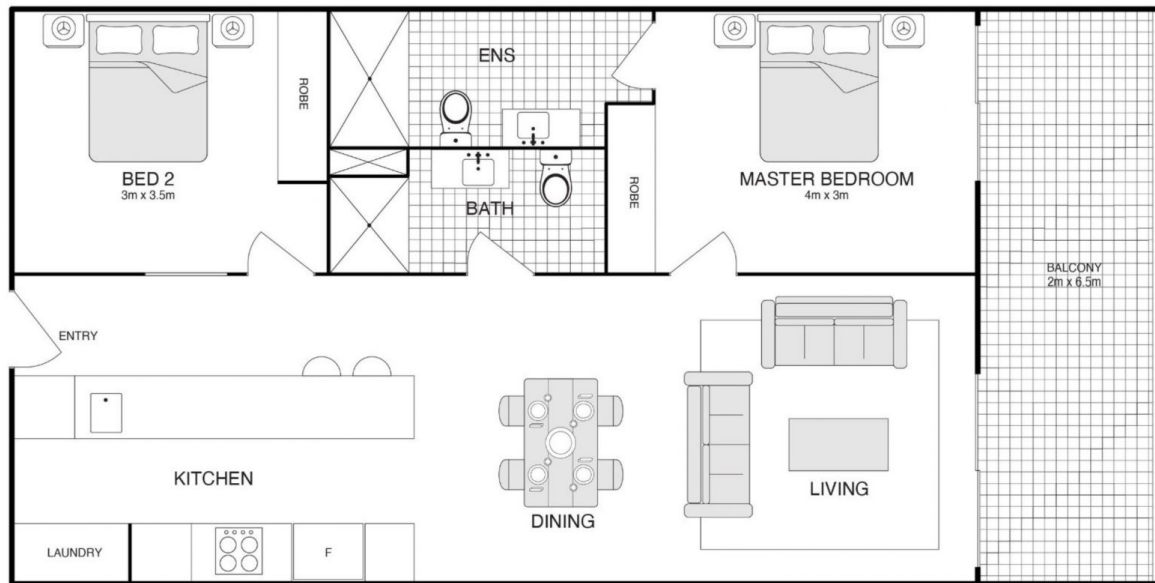
Embrace the vibrant energy of inner-city living with this sleek two-bedroom apartment in the acclaimed Mayfair development. Nestled in the lively No Name Lane precinct, you'll be just steps away from a variety of cafes, restaurants, and boutique shops. Canberra Centre, Braddon, and NewActon are all within a short walk, offering easy access to everyday essentials. And when you feel like connecting with nature, Lake Burley Griffin is a short walk away, perfect for scenic strolls and enjoying picturesque views. Plus, the Australian National University (ANU) is conveniently situated only 300 metres away, with a range of public transport options right at your doorstep.

Designed with modern living in mind, this apartment makes the most of its space with an open-plan layout that enhances both comfort and functionality. The master bedroom is a standout feature, offering ample space with a

Price : \$ 710,000
Building Size : 91 sqm
View : <https://www.aboveproperty.com.au/8101329>



Oumaya Escribe
02 5134 3942



Disclaimer: plan shown are for marketing purposes only, all dimensions are approximate and Not to scale. They are subject to errors and inaccuracies and no liability will be Accepted. Interested parties should make their own inquiries

Residence: 78 m²
Balcony: 13 m²
Total Area: 91 m²

52/45 West Row, City ACT 2601