



### 15/43 Hampton Circuit Yarralumla ACT

2 🛏 2 🚿 2 🚗

Discover the perfect blend of modern style and a prime location with this stunning two-level apartment in Yarralumla.

From the moment you step inside, the sophisticated design sets this home apart. A striking hardwood fishbone staircase with sleek glass and chrome accents leads you upstairs, where expansive double-glazed windows flood the space with light and provide delightful park views.

On the lower level, the open-plan living and dining area is an entertainer's delight, flowing effortlessly to a private front balcony. The chic kitchen is equipped with premium Miele appliances, including an induction cooktop, steam oven, and dishwasher, making cooking a pleasure. A stylish powder room with floor-to-ceiling tiles adds a touch of

**Type** : Apartment  
**Price** : \$949,900+  
**Land Size** : 170 sqm  
**View** : <https://www.aboveproperty.com.au/8135778>

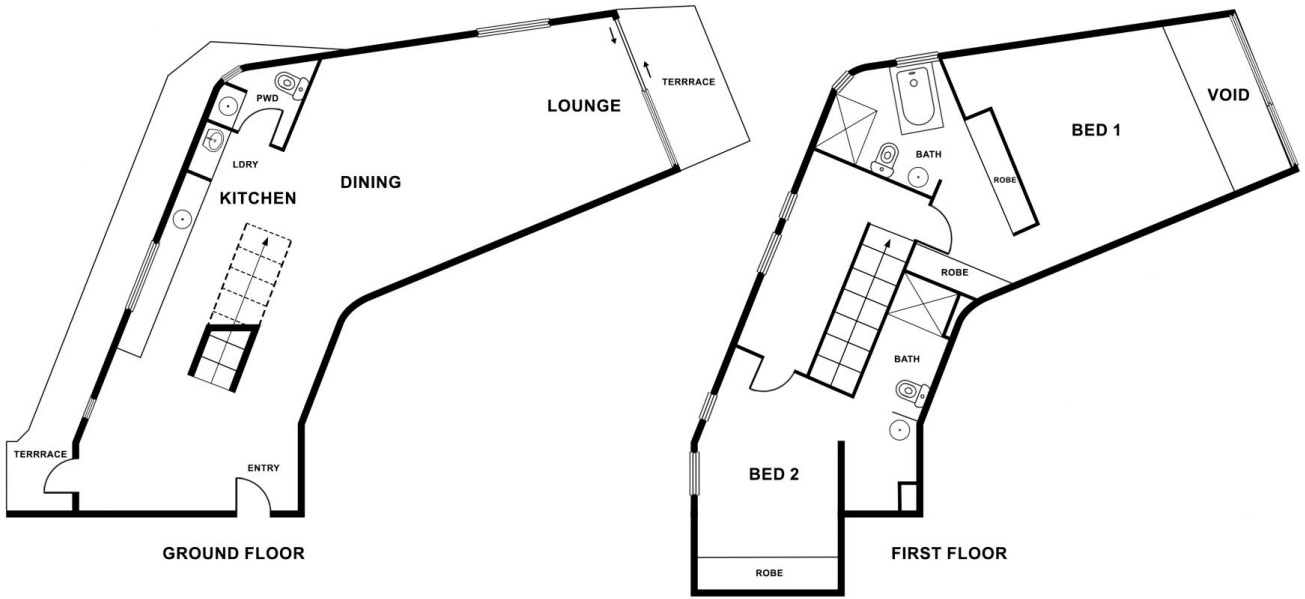


**Oumaya Escribe**  
02 5134 3942



**Matt Nicholls**  
02 5134 3942

[For full version visit the website](https://www.aboveproperty.com.au)



Unit 15/43 Hampton Cct, Yarralumla ACT 2600

Internal: 151 m<sup>2</sup> External: 19 m<sup>2</sup>

**DISCLAIMER:** Please be advised that the floorplan provided may be inaccurate and is solely approximate. It is important to note that the dimensions and proportions depicted are not to scale. Any reliance on the floorplan for precise measurements or spatial representation should be exercised with caution. We recommend verifying all dimensions and layout details independently to ensure accuracy.